

YORKSHIRE HOUSING



ALDERLEY & ALABURY HOUSE, YORK

PROPERTY KEY FACTS

Two mid-rise blocks of 30 flats (1, 2 and 3-bed), over 4 storeys, built in C.2000.

Energy performance features:

- Walls: cavity wall, insulated.
- Windows: fully double glazed.
- Roof: another dwelling above/below.
- Floor: another dwelling above/below.

Previous system: electric panel heaters.

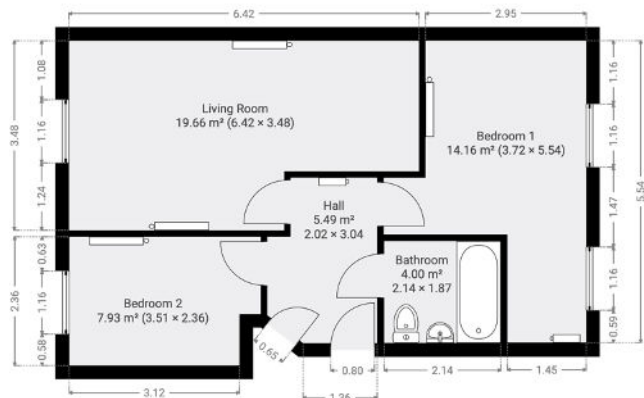
THE PROJECT

Yorkshire Housing owns or manages 16,500 homes across Yorkshire which are estimated to produce around 50,000 tonnes of carbon dioxide per annum. Yorkshire Housing plans to reduce carbon emissions to zero by 2050 by investing £50m over the next five years.

As part of this project, Yorkshire Housing announced in August 2023 the investment of £200,000 in a project to replace electric panel heaters with the Ambion low-carbon system in two of its blocks.

Alderley House and Alabury House are mid-rise blocks built around 2000 offering residents affordable housing.

AMBION SPECIFICATION: 2-bed flat



Total area: 51.2 m²

- 4 x large heat panels (820 W):
- 2 x small heat panels (430 W):
- 1 x control panel
- Total system power: 4.14 Kw (80.9 W/m²)

BENEFITS

Residents enjoy 24-hour thermal comfort at a typical running cost of £45.78 per month for a 2-bed flat (2,034 kWh per annum at 27 p/kWh) with an average daily temperature of 19.2° C.

Residents also enjoy improved air quality with minimum condensation and reduced dust.

“The property I have to say is beautifully warm, but not overly so, and the air didn’t feel damp at all despite the windows being closed. The tenant has said they are incredibly happy with the system and that their energy bills are showing a significant decrease as a result.” Yorkshire Housing Sustainability Manager
 “Overall, the house is comfortably warm and energy costs are less than expected.” Resident